

Design Charrette #1 Summary

Project Name: Cahuilla Long Range Transportation Plan
Project Number: 185034
Meeting: Design Charrette #1 – Day 1
Meeting Date: Thursday, March 10, 2022
Meeting Time: 6:00 PM – 8:00 PM
Meeting Location: Zoom Virtual Platform
Attendance: Public Works: Steven Leash and Garrett Pewe
Michael Baker: Dawn Wilson, Jacob Swim and Rachel Grant
Fourth World: Kim Kanuho
Cahuilla Members: Jonell John, Michelle Salgado, Michael Salgado, Andrea Candelaria, Will Madrigal, Daniel Salgado, Vanessa Maldonado, Leonella Leash, Rafael Rios, Stephanie Anderson Frost, Lynnette Leash, Edward Chacon, Sara Tinsley, Celeste Hughes, Elizabeth Rios, Jayne Liera, Robert Liera, Whitney Liera, Anthony Madigal and John Lebal. (20-26 People Total)

Prepared by: Kim Kanuho

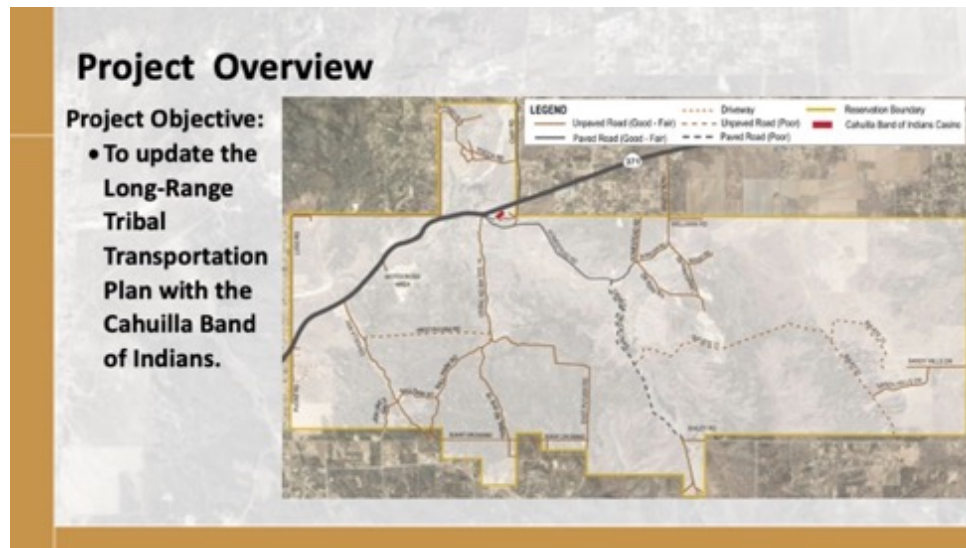


Discussion Items:

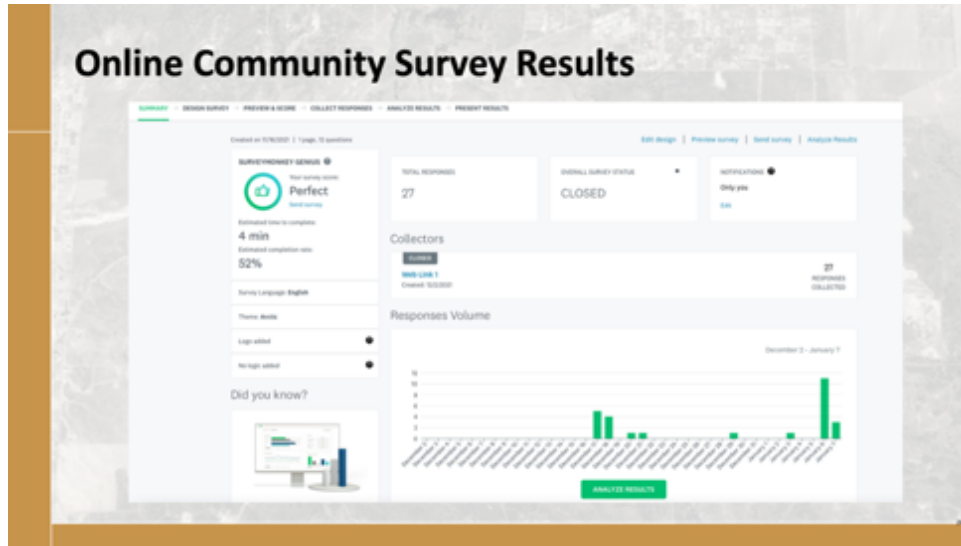
1. Welcome, Introductions & Project Overview

- Kim Kanuho opened and welcomed everyone to the meeting, then proceeded to review the PowerPoint presentation and Agenda items on the screen. Agenda, Meeting Flyers, Meeting Minutes and Video are available on the project website at www.CahuillaLRTP.net. The following was the initial discussions:
- Kim Kanuho gave an overview of the project team members and let the team briefly introduce themselves.
 - a. Public Works Department
 - i. Steven Leash and Garrett Pewe gave an overview of the project background and funding.
 - b. Michael Baker
 - i. Michael Baker will be the transportation planners and design team working with the Public Works Department to oversee the long-range transportation planning project and process.
 - Kim Kanuho – Outreach Coordinator with Fourth World Design Group
 - Dawn Wilson - Project Manager
 - Rachel Grant – Project Planner

- Jacob Swim – Project Planner



- Kim Kanuho gave an overview of the overall project, project objective, scope of work, planning process, community outreach and project website.
 - a. Project Overview and Project Objective
 - i. Long-Range Transportation Plan overview
 - ii. Design Charrette overview
 - iii. Project Objective: To update the Long-Range Tribal Transportation Plan with the Cahuilla Band of Indians
 - iv. Site is 18,884 acres
 - b. Project Scope of Work & Planning Process
 - i. Reviewed the planning process diagram which includes the (5) five planning phases, tasks and upcoming community meetings.
 1. Workshop #1 Nov. 13, 2021 - Completed
 2. **Design Charrette #1 March 10, 2022 – Today’s Meeting**
 3. Design Charrette #2 March 31, 2022 – Tentatively Scheduled
 4. Workshop #2 – Sept 2022 – Tentatively Scheduled
 5. Workshop #3 – Dec 2022 – Tentatively Scheduled
 - c. Community Outreach
 - i. Reviewed the Community Outreach purpose for the project, which includes to provide project updates, communicate, collaborate, and engage the Cahuilla community and stakeholders to gain valuable feedback for the Long-Range Transportation Plan.
 - ii. Upcoming Community Outreach event flyers and invites will be sent out via email from the Public Works Department, which will include a meeting date, time, location, meeting location or link via Zoom and project website link via a QR code.
 - iii. There is also a Project Banner posted at the Public Works Department.
 - d. Project Website Walkthrough
 - i. Project Website will include project information, updates, community outreach events, meeting materials and contact information if you have question or would like to provide feedback at www.CahuillaLRTP.net



2. Review Needs Assessments

- Kim Kanuho gave an overview of the community feedback received from:
 - a. Community Workshop #1
 - i. **Please see Community Workshop #1 Summary on project website.**
 - b. Online Community Survey Responses
 - i. **Please see Community Survey Summary on project website.**

3. Exercise 1: Review Focus Areas

- Jacob Swim gave an overview of the Focus Area Exercise and Breakout Rooms.
 - a. Exercise 1 – Focus Areas
 - i. At the first workshop in Nov 2021, we heard from the Tribe about specific transportation concerns on the Reservation. Based on that feedback, we identified the following focus concerns, which we would like to further review and discuss through the following exercise.
 - ii. **Please see attached Community Design Charrette 1 Exercise Feedback**

4. Exercise 2: Review Toolbox Solutions

- Rachel Grant gave an overview of the Toolbox Solutions Exercise and Breakout Rooms.
 - a. Exercise 2 – Toolbox Solutions
 - i. Based on the Focus Areas, we then identified the following toolbox solutions. In this exercise, we reviewed some examples of improvements within the six focus areas and had the community vote on what they liked and disliked through a zoom poll.
 - ii. **Please see attached Community Design Charrette 1 Exercise Feedback**

5. Meeting Wrap Up

- a. Discussed Project Next Steps
 - i. Design Charrette #2 – March 31, 2022
 - ii. Develop Recommendations – March/April 2022
 - iii. Workshop 2 – September 2022
 - iv. Finalize Report and Prioritization – 2022 TBD
 - v. Workshop 3 – December 2022
 - vi. Project Wrap Up – December 2022/January 2023

6. Giveaway - Winners

- a. 1st Winner – Jonelle John
- b. 2nd Winner – Michael Salgado (Two Steps)

7. Questions + More Information

- a. Visit www.CahuillaLRTP.net
- b. Contact Steven Leash and/or Garrett Pewe at PublicWorks@Cahuilla.net
- c. Other Questions, Comments & Feedback
 - i. Question: Will there multiple days of the Charrette, the presentation indicates Day 1?
 1. Yes, Day 2 or Charrette 2 will be held later in the month and an updated flyer will be emailed out shortly.
 2. This meeting will be an overview of our analysis and assessments, next meeting will be our recommendations.
 3. Majority of people prefer the 2nd Design Charrette Meeting to occur during the week in the evening after 5 p.m.
 - ii. Question: Will we be able to review all the results and comments from the online survey?
 1. Yes, will upload the PowerPoint Presentation and Survey Summary on the project website.
 - iii. Question: Can we get the cattle guard placed back where it was previously located on Yucca Road?
 - iv. Question: Could the middle yellow lane be an option? Instead of turning lanes, because people trying to get on and off the highway could utilize the middle lane.
 - v. Question: Signage is important but how do we get them recognized on internet directions for emergency vehicles/situations?
 - vi. Question: Would like more stats on roundabouts.
 - vii. Question: Just a suggestion because of inclement weather snow and major fog is where lighting is needed.
 - viii. Question: The gates are a concern when considering emergency situations, and power outages.
 - ix. Question: Can we get a pin instead of keys at the gate? It was mentioned they have those boxes.
 1. Pins don't work for us because then the pins can be given to whoever.
- d. Steven Leash and Dawn Wilson gave their closing remarks and thanks everyone for participating.

8. Adjourn

Next Meeting: March 31, 2022 at Time TBD at Tribal Hall

Attachment A: Community Design Charrette 1 Exercise Feedback

Cahuilla Long Range Transportation Plan Community Design Charrette #1 Exercises Feedback

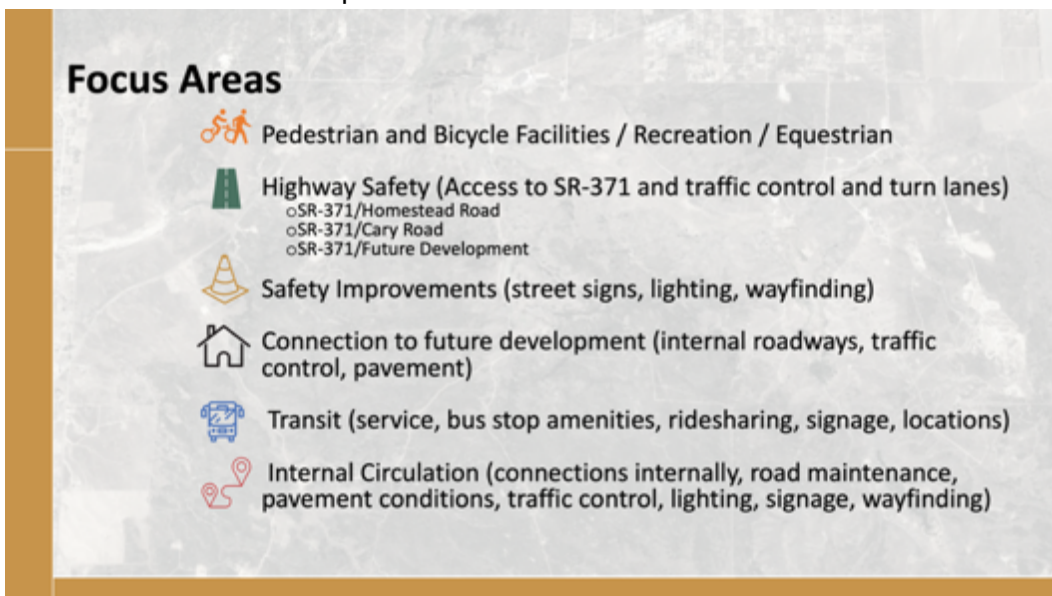
Exercise 1: Focus Areas

1. At the first workshop in Nov 2021, we heard from the Tribe about specific transportation concerns on the Reservation. Based on that feedback, we identified the following focus areas to further review and discuss through the following exercise.

- a. First, what is a Focus Area?



- b. Next, we walked through the Six (6) Focus Areas and symbols used to help identify on the Focus Area Map on the next slide.



- c. Then we reviewed the Focus Area Map that shows the roadway network within the Reservation and the Focus Areas throughout the Reservation. The brown call-outs are “Near Term” development projects that are expected to be completed in the next 3 to 5 years. We also identify the future development on the west side of the Reservation in green and purple areas (2,000-acre site and 183-acre site). A few Focus Areas on this map to identify:
- The Pedestrian/Bike symbol indicates locations where sidewalks, trails, bicycle facilities could be provided.
 - The Highway Safety symbol is referring to traffic controls at SR-371 such as traffic signals and turning lanes.
 - The house symbol is potential roadway connections to future development and could improve circulation within the Reservation.



- d. Next, we reviewed the three (3) Breakout Groups by Focus Areas

Breakout Groups –

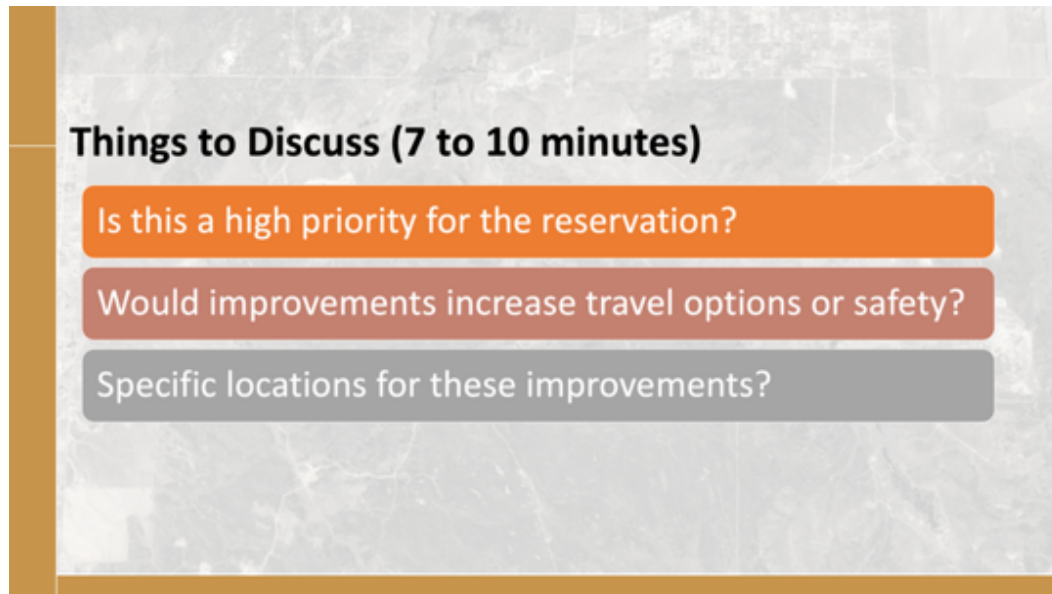
- Each breakout room will last 7 to 10 minutes
- You’ll discuss one of the 3 Focus Areas
- Facilitator will take notes
- After 10 minutes, you’ll move to a new Focus Area
- Once you’ve done all 3 Focus Areas, we’ll report out

Focus Area 1:
Highway 371 / Access Points

Focus Area 2:
Pedestrian / Bicycle Access

Focus Area 3:
Reservation Roads / Transit Access

- e. Lastly, we reviewed the three (3) Questions for each Focus Area Breakout Group, then broke out into our Zoom Breakouts.



Exercise 1 Feedback:

- **Focus Area 1: Highway 371 Safety/Access Points – Jacob Swim**
 - Q1: Is this a high priority for the reservation?
 - Homestead/371
 - Deadman’s curve on 371 – high speeds, fatalities, more signage needed
 - The new Clinic access will be important, turn lanes may be needed.
 - Homestead, Health Clinic and Cary Road
 - Q2: Would improvements increase travel options or safety?
 - Roundabouts and signals would be beneficial at 371/Homestead
 - Traffic signal is preferred
 - How does a Roundabout not cause more accidents, when people are going 50-80 mph?
 - There are signs as they approach, medians to calm traffic, blinking.
 - Q3: Specific locations for these improvements?
 - The focus should be on 371/Homestead for safety.
 - Remove blind spot at Cary Road/371 when the Fire Station goes in. Line of sight issues
 - Dedicated WB left-turn lane is needed at 371/Homestead will be helpful to avoid rear-end accidents.

- **Focus Area 2: Pedestrian/Bicycle Access – Rachel Grant**
 - Q1: Is this a high priority for the reservation?
 - Would like to be able to travel along 371 safely
 - Travel demands will increase with new clinic
 - Kids ride to and from rec center
 - Would like to see more accessibility to places where people work
 - Q2: Would improvements increase travel options or safety?

- More bike and pedestrian paths will increase travel demand
 - Some concerns with safety and people accidentally driving onto the reservation and driving unsafely around bicyclists and pedestrians
 - For people working in the reservation, more people would bike/walk to work if there was easier access
 - Q3: Specific locations for these improvements?
 - 371 access
 - Access to key destinations like the casino, health clinic, school bus stop, and rec center
 - Bike storage shelters at school bus stops
 - Casino entrance has a lot of foot traffic and is not pedestrian friendly
 - Other Questions and Comments:
 - Some concerns about pedestrian scale lighting and making sure that the community will not be lit up everywhere with lighting.
 - All over paved road for kids riding bikes
 - Would like the opportunity to ride bikes safely
 - Bike lanes to bus stops
 - Place to put bikes
 - Don't have public transit, have bus stops –
 - One at Tribal Hall
 - Establish a bus route
 - Work with local school district
 - Near Packet Drive, across street
 - Bautista Drive
- **Focus Area 3: Reservation Roads/Transit Access – Dawn Wilson**
 - Q1: Is this a high priority for the reservation?
 - Q2: Would improvements increase travel options or safety?
 - Q3: Specific locations for these improvements?
 - Additional Question 4: If transit or shuttle services were provided, what would you use them for or where would you like to go?
 - Group 1: get the kids to school, doctors appointments, tribal hall, Hemet, Temecula, Murietta,
 - Group 2: Schools in Temecula (transit to school or activities), activities in the winter, elders need access
 - Group 3: Shuttle for youth to school in Hemet and/or Temecula, elders, clinics, Palm Desert/ Palm Springs, consider extending this opportunity to the residents in Anza (joint effort). Dial a ride services can be made available, but only on weekdays – no holidays or weekends – and primarily for doctors appointments.
 -
 - Additional Question5: Question asked of the groups: What issues with the existing transportation network do you experience and what would you like see fixed?
 - Group 1: CTT is the main vein and it's damaged due to weather; paving is good particularly during bad weather; potholes need to be repaired; cattle guard is missing on Yucca Road

- Group 2: Paved roads need to be redone; south boundary road (proposed) is good – could serve as a fire break; need to improve access to the 2,000-acre BLM land areas; need speed limit signs
- Group 3: big pot holes are an issue; some don't have paved roads, which are impacted by flooding;

Exercise 2: Toolbox Solutions & Polling

1. Based on the Focus Areas, we then identified the following toolbox solutions. In this exercise, we reviewed some examples of improvements within the six Focus Areas and had the community vote on what they liked and disliked through a zoom poll.

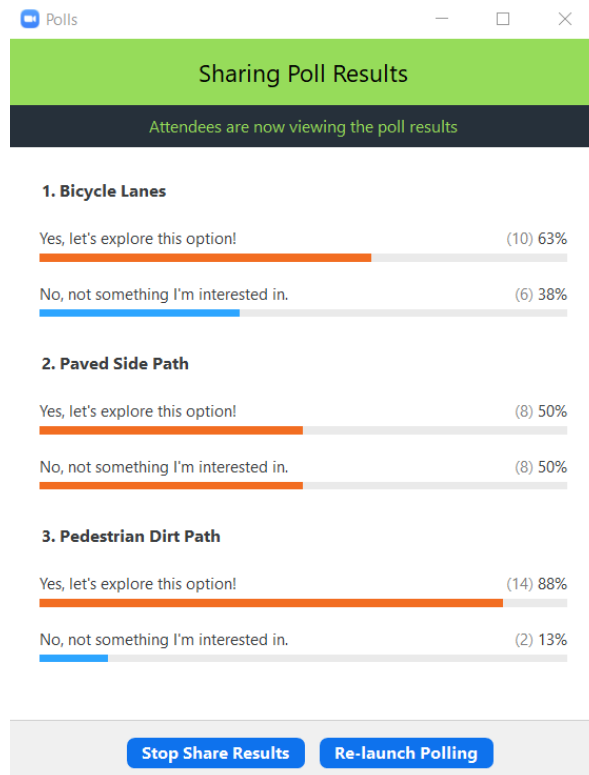
a. Reviewed All Examples of Improvements within the Focus Areas



b. Poll 1: Pedestrian & Bicycle Facilities Recreation



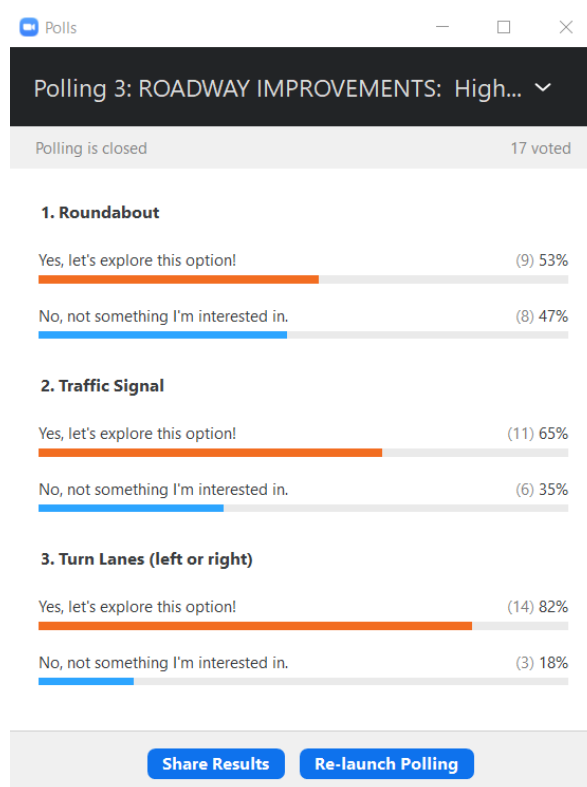
i. Poll 1 Results: Bicycle Lanes, Paved Side Path and Pedestrian Dirt Path



c. Poll 2: Roadway Improvement – Highway 371



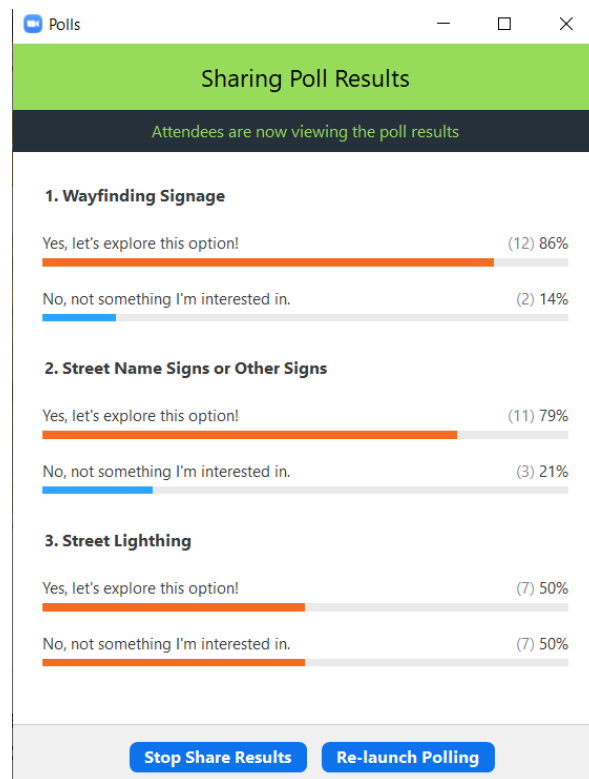
i. Poll 2 Results – Roundabout, Traffic Signal and Turn Lanes



d. Poll 3: Safety Improvements



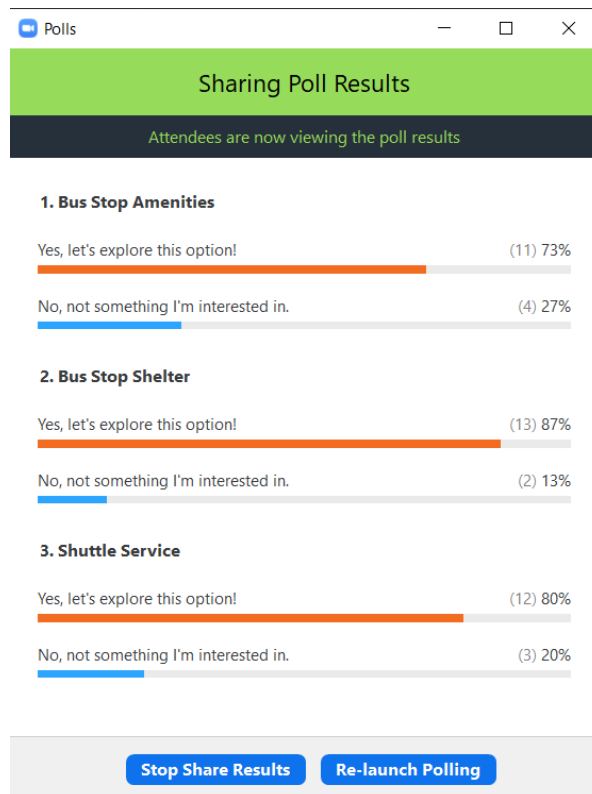
i. Poll 3 Results – Wayfinding Signage, Street Name or Other Signs and Street Lighting



e. Poll 4: Transit Improvements



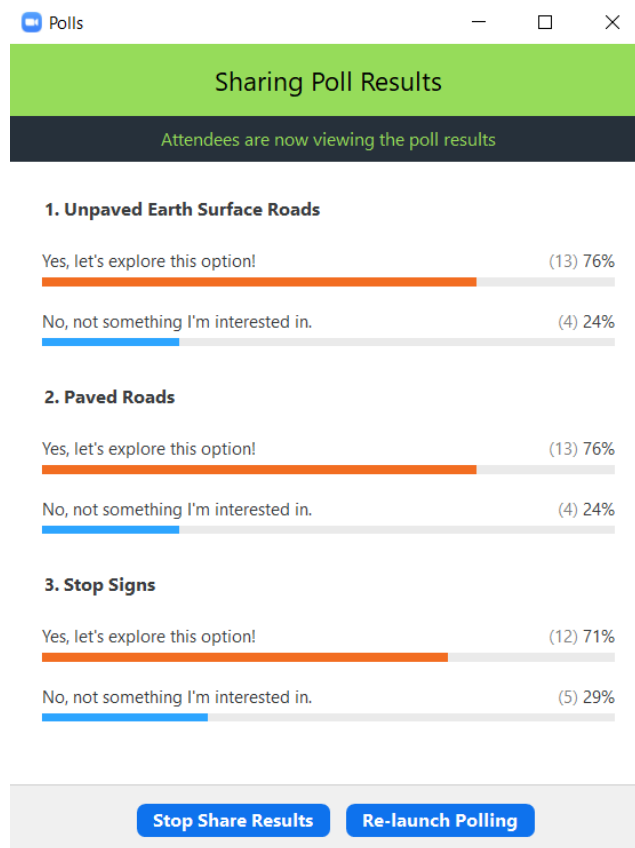
i. Poll 4 Results – Bus Stop Amenities, Bus Stop Shelter and Shuttle Service



f. Poll 5: Internal Circulation



i. Poll 5 Results – Unpaved Roads, Paved Roads and Stop Signs



Photos:

Community Workshop #1 Feedback



CAHUILLA LONG RANGE TRANSPORTATION PLAN

JOIN US TO DISCUSS PROJECT UPDATES AND PROVIDE FEEDBACK.

BE ENTERED INTO A DRAWING FOR 3 OF 4 \$75 AMAZON GIFT CARDS.

CAHUILLA COMMUNITY WORKSHOP #1
VIRTUAL #10 ZOOM:
https://zoom.us/j/95482825906
SATURDAY, NOVEMBER 13, 2021
9:10-10 A.M. PST
9795 N. BULL RIVER CAHUILLA COMMUNITY CENTER, A. STATE HIGHWAY 99
More info visit: http://www.cahuilla.org



What are your community's transportation safety concerns?

Word cloud terms: accidents, street, turning, reservation, speed, traffic, lanes, drivers, need, speed, entrances, roads, sharp, bend.



Test: What is your favorite food?



Word cloud terms: steak, tortillas, meat, beans, salmon, buttermilk, brûlée, cream, raspberries, seafood, food, potatoes, shrimp, spaghetti, peanut, tamales.

Garrett Pewe

Rachel Grant

Dawn Wilson

Jacob Swim

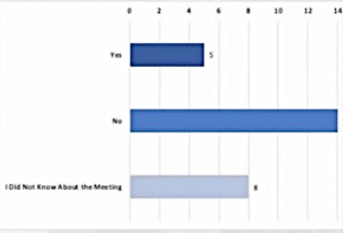
Steve Leash

Leonella Leash

Lynn Iphone 7

Online Community Survey

Q10. Did you attend the virtual Cahuilla Community Workshop #1 on November 13, 2021?



Response	Count
Yes	3
No	14
I Did Not Know About the Meeting	8

DID YOU PARTICIPATE?

0:00 | 1 question | 3 of 19 (15%) participated

3/3 (100%) answered

1,1 participated in the... (Single Choice) *

Response	Count	Percentage
Workshop #1	0/3	0%
Online Survey	2/3	67%
Both Workshop & Online Survey	1/3	33%
Neither Workshop nor Online Survey	0/3	0%

End Poll

Garrett Pewe

Rachel Grant

Dawn Wilson






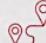
Jacob Swim

Steve Leash

Leonella Leash

Lynn Iphone 7

Focus Areas

-  Pedestrian and Bicycle Facilities / Recreation / Equestrian
-  Highway Safety (Access to SR-371 and traffic control and turn lanes)
 - oSR-371/Homestead Road
 - oSR-371/Cary Road
 - oSR-371/Future Development
-  Safety Improvements (street signs, lighting, wayfinding)
-  Connection to future development (internal roadways, traffic control, pavement)
-  Transit (service, bus stop amenities, ridesharing, signage, locations)
-  Internal Circulation (connections internally, road maintenance, pavement conditions, traffic control, lighting, signage, wayfinding)

J
Jonell John

Rachel Grant
Rachel Grant

Garrett Pewe
Garrett Pewe

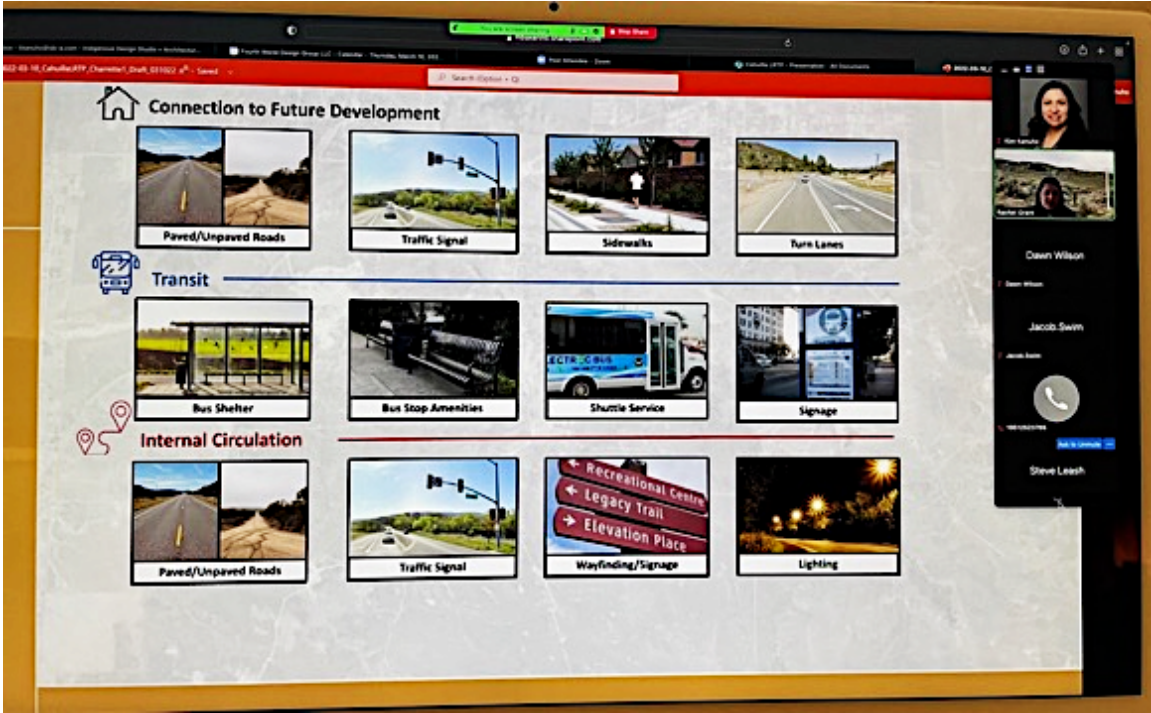
Kim Kaniho
Kim Kaniho

Dawn Wilson
Dawn Wilson

Jacob Swin
Jacob Swin

Steve Leash
Steve Leash

rachel leash
rachel leash



Connection to Future Development

- Paved/Unpaved Roads
- Traffic Signal
- Sidewalks
- Turn Lanes

Transit

- Bus Shelter
- Bus Stop Amenities
- Shuttle Service
- Signage

Internal Circulation

- Paved/Unpaved Roads
- Traffic Signal
- Wayfinding/Signage
 - Recreational Center
 - Legacy Trail
 - Elevation Place
- Lighting

2022-03-15_California_Chamber_of_Commerce...
 Search Chamber of Commerce...
 Pedestrian & Bicycle Facilities / Recreation

PEDESTRIAN DIRT PATH

Chamber of Commerce
 Dawn Wilson
 Dawn Wilson
 Jacob Swain
 Jacob Swain
 Steve Leash
 Steve Leash

2022-03-15_California_Chamber_of_Commerce...
 Search Chamber of Commerce...
 Pedestrian & Bicycle Facilities / Recreation

BIKE LANE **PAVED SIDE PATH** **PEDESTRIAN DIRT PATH**

PEDESTRIAN & BICYCLE / RECREATION

300-00-00 2 questions 1 of 10 (20%) completed

1. Bike Lane (Single Choice) | 50% (100%) answered

Yes, let's explore this option | 100% (4/4)

No, not something I'm interested in | 0% (0/0)

2. Paved Side Path (Single Choice) | 50% (100%) answered

Yes, let's explore this option | 100% (4/4)

No, not something I'm interested in | 0% (0/0)

3. Pedestrian Dirt Path (Single Choice) | 50% (100%) answered

Yes, let's explore this option | 100% (4/4)

No, not something I'm interested in | 0% (0/0)

YES, let's explore this option! **NO, not something I'm interested in**

Chamber of Commerce
 Dawn Wilson
 Dawn Wilson
 Jacob Swain
 Jacob Swain
 Steve Leash
 Steve Leash

Roadway Improvements: Highway 371

Roundabouts vs. Traffic Signals

Four Way Stop

32 Vehicle Conflicts
24 Pedestrian Conflicts

Roundabout

8 Vehicle Conflicts
8 Pedestrian Conflicts

	Roundabouts	Traffic Signals	Why?
# of Injury Collisions	✓		Vehicles must slow down to enter roundabouts
Collision Severity	✓		Vehicles in roundabouts travel same direction
Roadway Space		✓	Traffic signals require less space
Traffic Flow	✓		Vehicles yield at roundabouts & required to stop
Comfort		✓	People are familiar with how traffic signals work
Placemaking	✓		Roundabout center islands provide opportunities for gateways/landscaping
Construction Cost		✓	Traffic signals require less to be installed
Operational Cost	✓		Roundabouts cost less to operate in the long term

Roadway Improvements: Highway 371

ROUNDBOUT

TRAFFIC SIGNAL

TURN LANES

YES, let's explore this option!
 NO, not something I'm interested in

ROADWAY IMPROVEMENTS: Highway 371

1. Roundabout (Single Choice) - 100% (100%) answered

Yes, let's explore this option! - 80% (80%)

No, not something I'm interested in - 20% (20%)

2. Traffic Signal (Single Choice) - 100% (100%) answered

Yes, let's explore this option! - 67% (67%)

No, not something I'm interested in - 33% (33%)

3. Turn Lanes (Left or Right) (Single Choice) - 100% (100%) answered

Yes, let's explore this option! - 75% (75%)

End Poll